

# Stadium Place

Master Developer: GEDCO

East 36 Street

PROPOSED CONDOMINIUMS

EDNOR APARTMENTS II  
(85 units)

EDNOR APARTMENTS  
(110 units)

HARRY AND JEANETTE WEINBERG  
COURT APARTMENTS (71 units)

VENABLE APARTMENTS II  
(74 units)

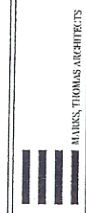
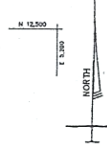
PROPOSED LOCATION: GREEN HOUSE® LONG TERM CARE BUILDING

PROPOSED VILLAGE CENTER

HARRY AND JEANETTE WEINBERG YMCA

THANKSGIVING PLACE

33rd Street



"THE GREEN HOUSE" Project At  
**STADIUM PLACE**  
Baltimore City

SHEET TITLE  
SITE  
PLAN  
DATE 06/23/11  
DRAWN BY JTB  
REVISIONS  
CON. APPLICATION

IMPORTANT: ALL RIGHTS RESERVED  
THIS DOCUMENT IS THE PROPERTY OF MAHES, THOMAS ARCHITECTS AND IS NOT TO BE REPRODUCED OR TRANSMITTED IN ANY FORM OR BY ANY MEANS, ELECTRONIC OR MECHANICAL, WITHOUT THE WRITTEN PERMISSION OF MAHES, THOMAS ARCHITECTS.

